

Dörr Industries Package for Cabinet Vision

Table of contents

| | |
|---|----|
| Introduction | 15 |
| Installation notes | 16 |
| Network Installation..... | 16 |
| General remarks..... | 16 |
| Dörr Industries package overview | 17 |
| Using the Dörr Industries Package | 22 |
| Once this package is imported, you can start using it in Cabinet Vision. | 22 |
| New Projects | 22 |
| Choose a handle assignment: | 24 |
| Existing Projects | 29 |

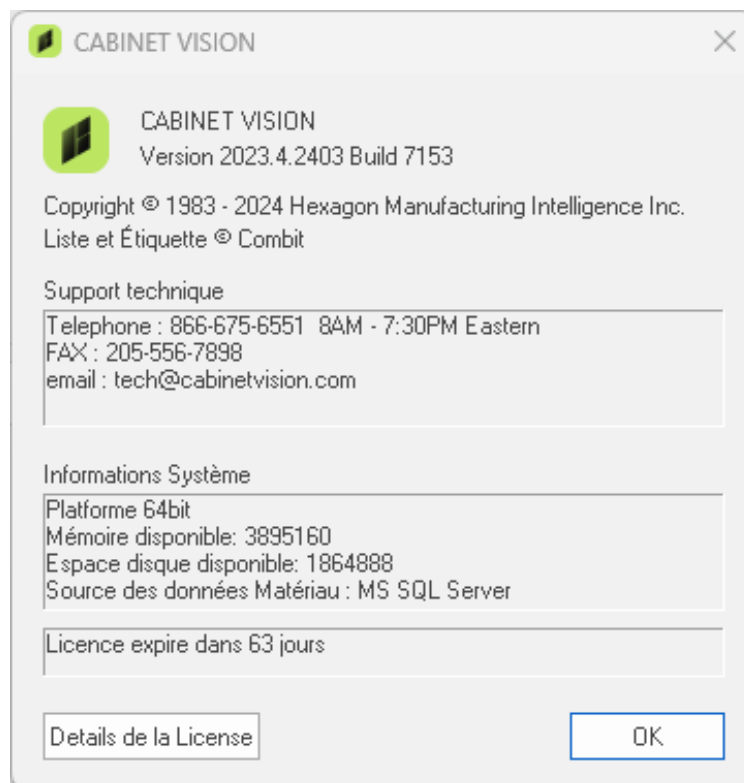
Introduction

Thank you for downloading the Dörr Industries package. If you did not receive this file from the Planit Canada website (<https://planitcanada.ca/>), the contents of this package may not be correct or functional. Only install Cabinet Vision installation packages from a trusted source.

This package is compatible only with Cabinet Vision version 2023.4 (or higher) and will not work with earlier versions.

If you need customization of this package or any of its contents, please contact the technical team via [planitcanada.ca](https://planitcanada.ca/training-support/request-support/) (<https://planitcanada.ca/training-support/request-support/>).

The following instructions will help you import and use this package in Cabinet Vision. Thank you and enjoy!



Installation notes

- It is strongly recommended to create a backup of your current database before importing this package. The backup and file transfer procedures in Cabinet Vision help contain more information on this topic.
- This package is NOT intended for versions earlier than Cabinet Vision version 2022.4.

Network Installation

If you are installing this package on a network that includes a network installation of Cabinet Vision, please follow these steps:

- It is preferable to install the package on the server.*
- All users must be disconnected from Cabinet Vision. Check the Network Administrator Status tab to lock all users.
- Once the package is installed, run the Update Version utility and unlock the users.

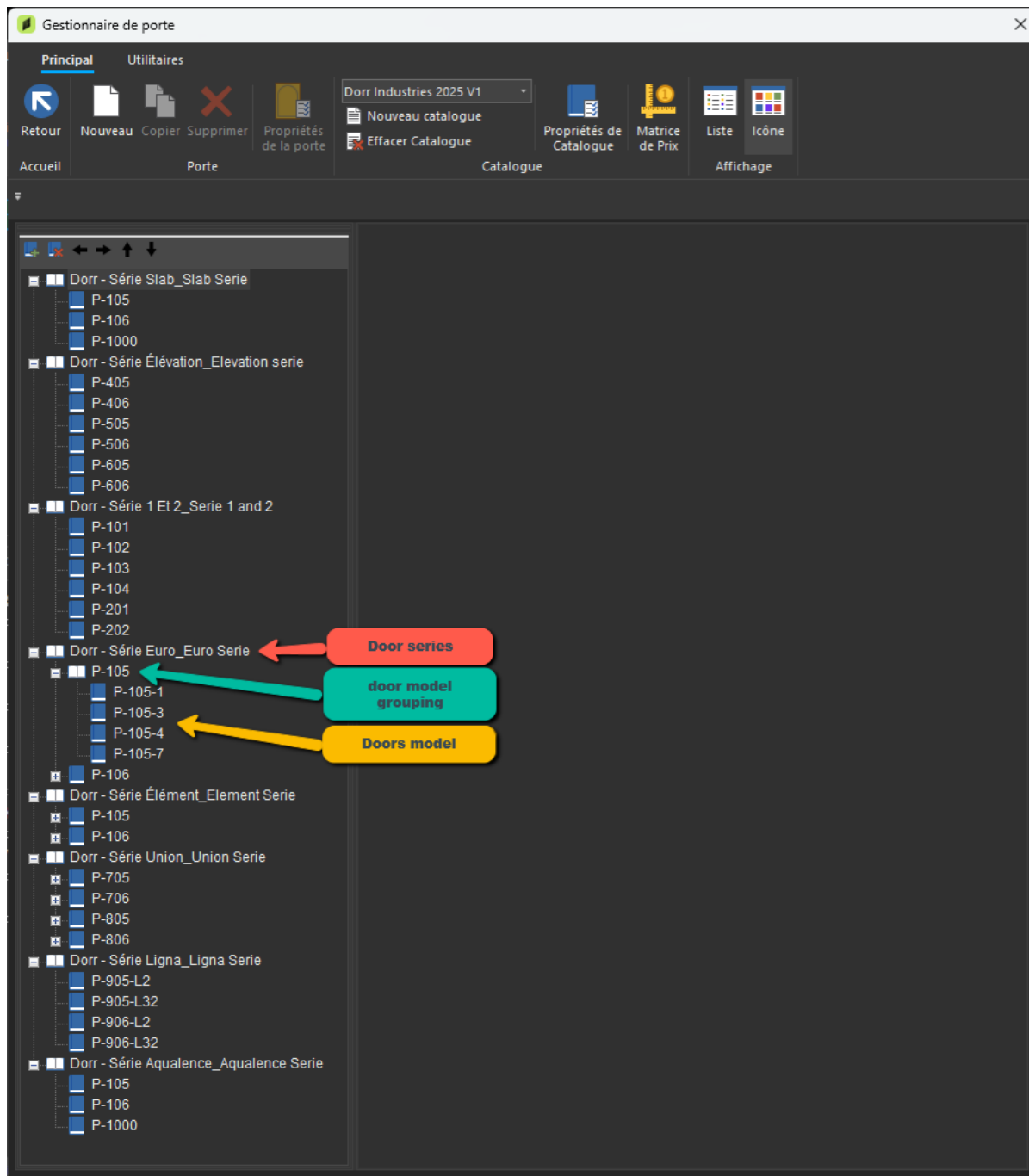
* If the server is not available, the package can be installed on a workstation, but the rest of the steps must be followed.

General remarks

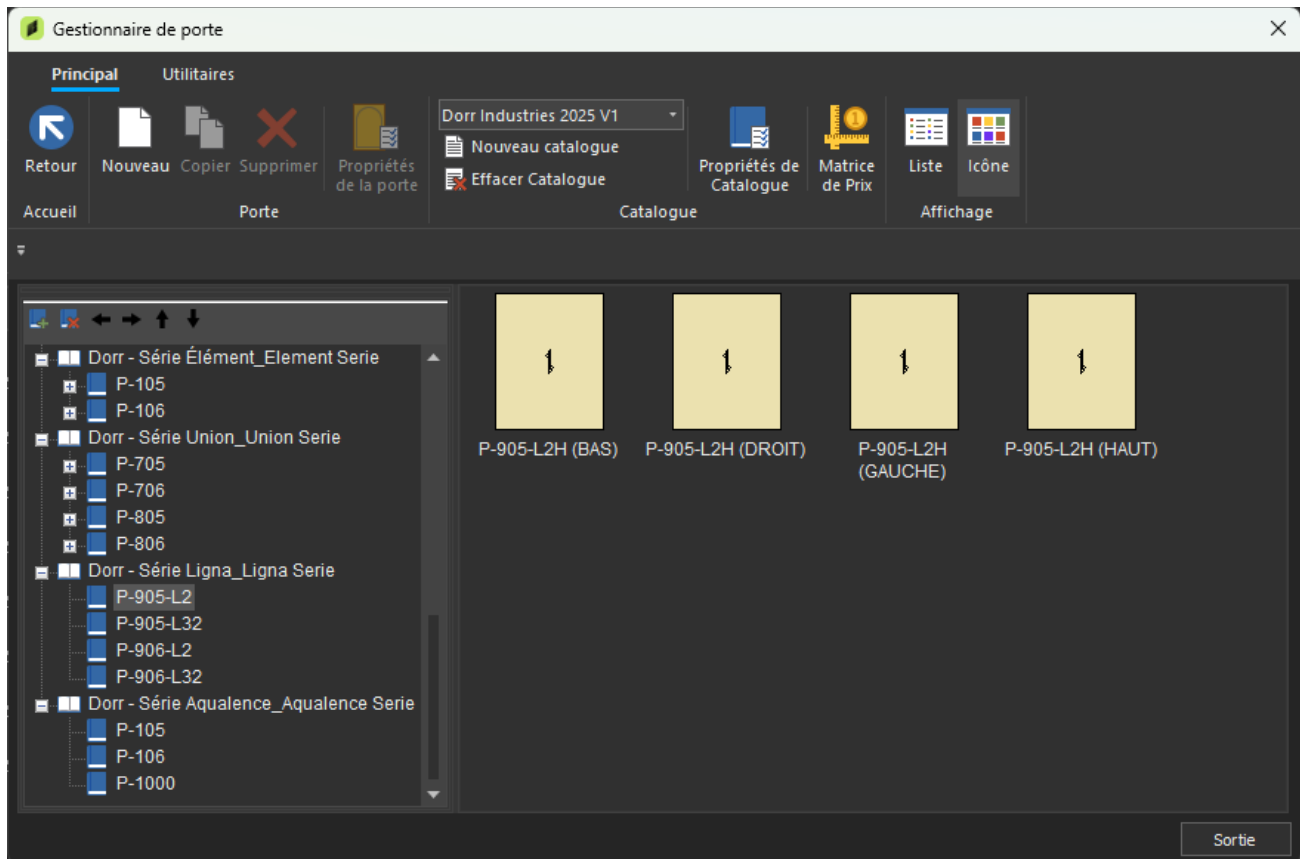
- This package was created using metric standards and can be used in metric or imperial units.
- The values used in this package can be modified to reflect the sizes used in your company.
- Please report any issues related to this package to the Planit Canada technical support team.
- Newer or updated versions of this package can be found on the Cabinet Vision download page:
<https://planitcanada.ca/solutions/cabinet-vision/tools-packages/>
- The contents of this package can be freely modified to meet your needs, but if it does not work correctly after modification, you can resolve this by:
 - Reimporting the original package and allowing it to overwrite existing items.
 - Contacting the technical support team (<https://planitcanada.ca/training-support/request-support/>)

Dörr Industries package overview

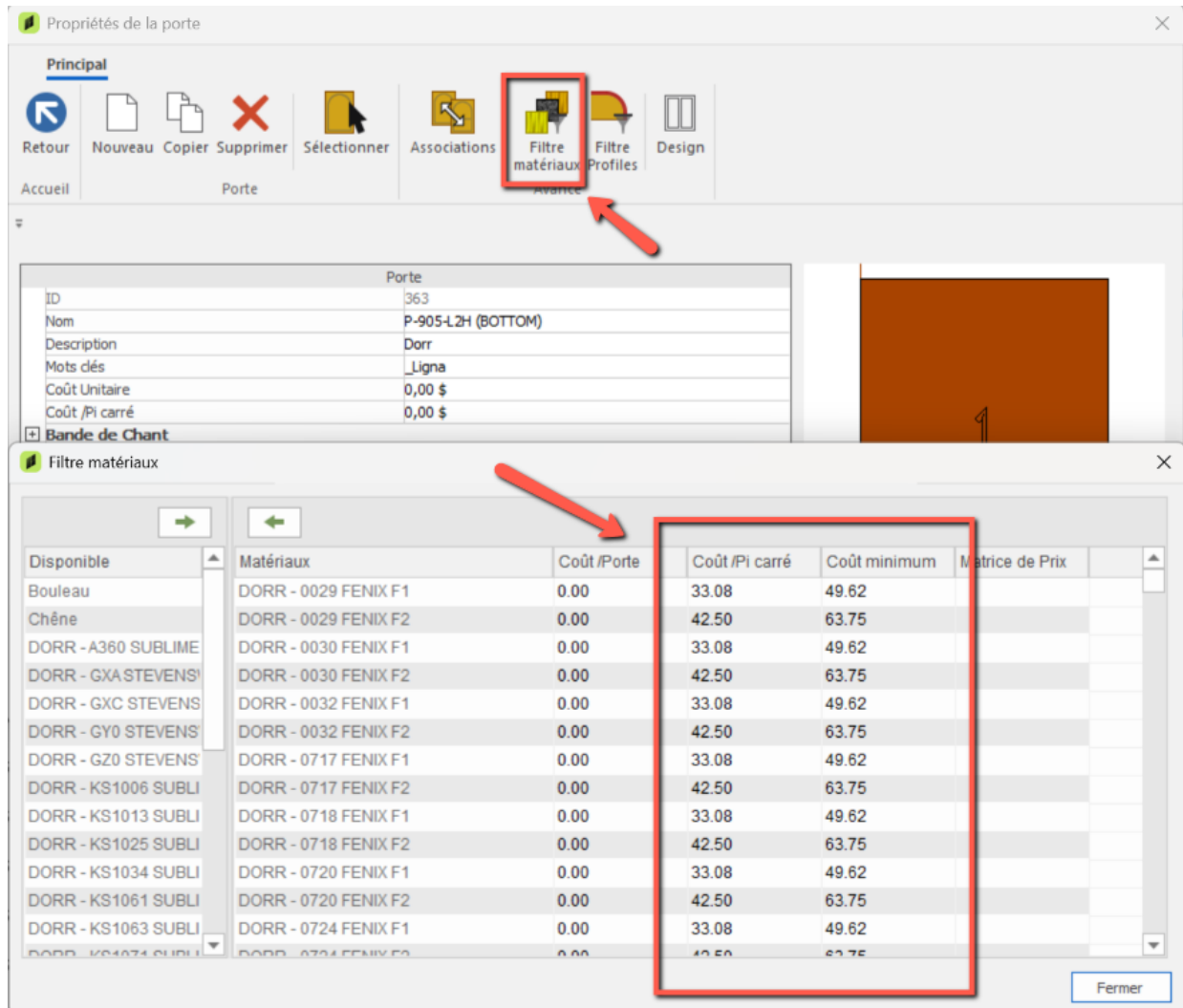
The Dörr Industries door catalog is divided into several categories. First, there are door series; then, groupings of models starting with the same model numbers; and finally, each door model.



Some door models include top and bottom doors, while others have left and right sides. Each door model, with several variants, includes handle positioning options.



Each door has a price associated with its color. Prices are for information only and are subject to change without notice.



Propriétés de la porte

Principal

Retour Nouveau Copier Supprimer Sélectionner Associations **Filtre matériaux** Filtre Profils Design

Accueil Porte Avance

| Porte | |
|----------------|--------------------|
| ID | 363 |
| Nom | P-905-L2H (BOTTOM) |
| Description | Dorr |
| Mots clés | Ligna |
| Coût Unitaire | 0,00 \$ |
| Coût /Pi carré | 0,00 \$ |

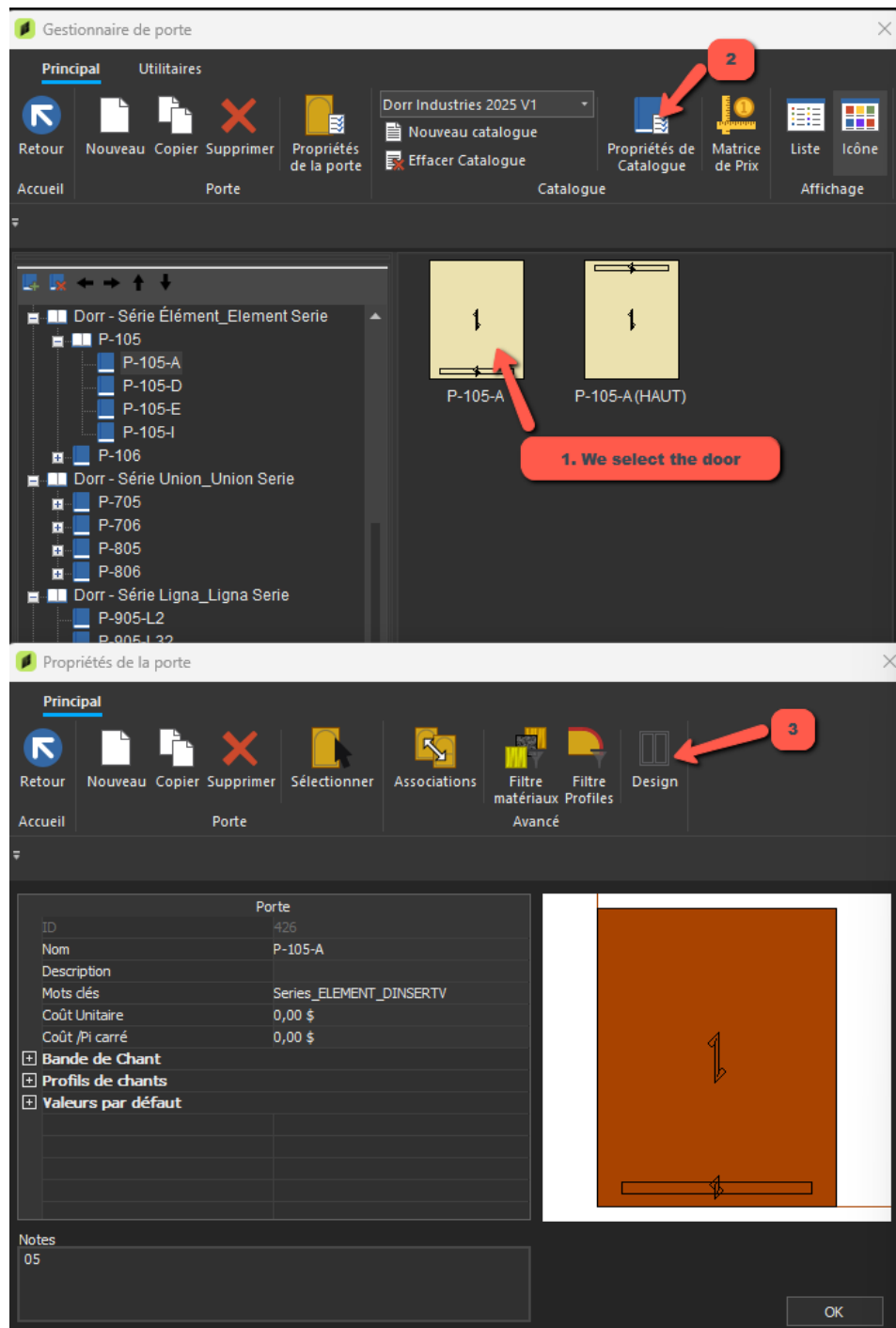
Bande de Chant

Filtre matériaux

| Disponible | Matériaux | Coût /Porte | Coût /Pi carré | Coût minimum | Matrice de Prix |
|---------------------|----------------------|-------------|----------------|--------------|-----------------|
| Bouleau | DORR - 0029 FENIX F1 | 0.00 | 33.08 | 49.62 | |
| Chêne | DORR - 0029 FENIX F2 | 0.00 | 42.50 | 63.75 | |
| DORR - A360 SUBLIME | DORR - 0030 FENIX F1 | 0.00 | 33.08 | 49.62 | |
| DORR - GXA STEVENS | DORR - 0030 FENIX F2 | 0.00 | 42.50 | 63.75 | |
| DORR - GXC STEVENS | DORR - 0032 FENIX F1 | 0.00 | 33.08 | 49.62 | |
| DORR - GY0 STEVENS | DORR - 0032 FENIX F2 | 0.00 | 42.50 | 63.75 | |
| DORR - GZ0 STEVENS | DORR - 0717 FENIX F1 | 0.00 | 33.08 | 49.62 | |
| DORR - KS1006 SUBLI | DORR - 0717 FENIX F2 | 0.00 | 42.50 | 63.75 | |
| DORR - KS1013 SUBLI | DORR - 0718 FENIX F1 | 0.00 | 33.08 | 49.62 | |
| DORR - KS1025 SUBLI | DORR - 0718 FENIX F2 | 0.00 | 42.50 | 63.75 | |
| DORR - KS1034 SUBLI | DORR - 0720 FENIX F1 | 0.00 | 33.08 | 49.62 | |
| DORR - KS1061 SUBLI | DORR - 0720 FENIX F2 | 0.00 | 42.50 | 63.75 | |
| DORR - KS1063 SUBLI | DORR - 0724 FENIX F1 | 0.00 | 33.08 | 49.62 | |
| DORR - KS1071 SUBLI | DORR - 0724 FENIX F2 | 0.00 | 42.50 | 63.75 | |

Fermer

Each door has an arrow representing the direction of the wood grain if applicable. These arrows are not visible in plan and elevation views. If you want these arrows to be visible, it is entirely possible.



Gestionnaire de porte

Principal

Retour Presse-Papier Fenêtre Arrière Tous Zoom Calques Sélectionner Sélectionner tous Mesure Informations Supprimer Percage en Ligne Aide

Touillage

Position X 11 5/16

Position Y 13 1/32

Position Z 0

Largeur (DX) 1 13/32

Longueur (DY) 3 15/16

Profondeur (DZ) 0

Angle 0.0

Type Trajet

Couper Centre

Outils Sélection automatique

Description Grain Direction Line

4. we double click on the door

5. Right click + Properties

6

7

8

9. We type the desired value depending on where we want to see the arrow or not.

1 = Hide in plan
2 = Hide in elevation
3 = Hide in plan + elevation
4 = Hide in 3D
5 = Hide in plan and 3D
6 = Hide in elevation and 3D
7 = Hide in plan, elevation and 3D

Propriétés opérations

Outils Touillage Dérogation Paramètres

| Paramètre | Valeur | Type | Description |
|-----------|---------|----------|-------------|
| FACEWP | 1 | Valeur | |
| HIDE | 7 | Valeur | |
| AX | 0.0 | Valeur | |
| AY | 0.0 | Valeur | |
| AZ | 0.0 | Valeur | |
| DX | 1 13/32 | Equation | |
| DY | 3 15/16 | Equation | |
| DZ | 0 | Valeur | |

Ajouter Supprimer Modifier

OK Annuler

Modifier le paramètre

Type Entier Style Standard

Nom HIDE

Description

Valeur 7

Choix

Ajouter Supprimer Monter Descendre

SI

ALORS

Résultat du test

Test

UCS

10

OK Annuler

Ready

Impériale 1/32

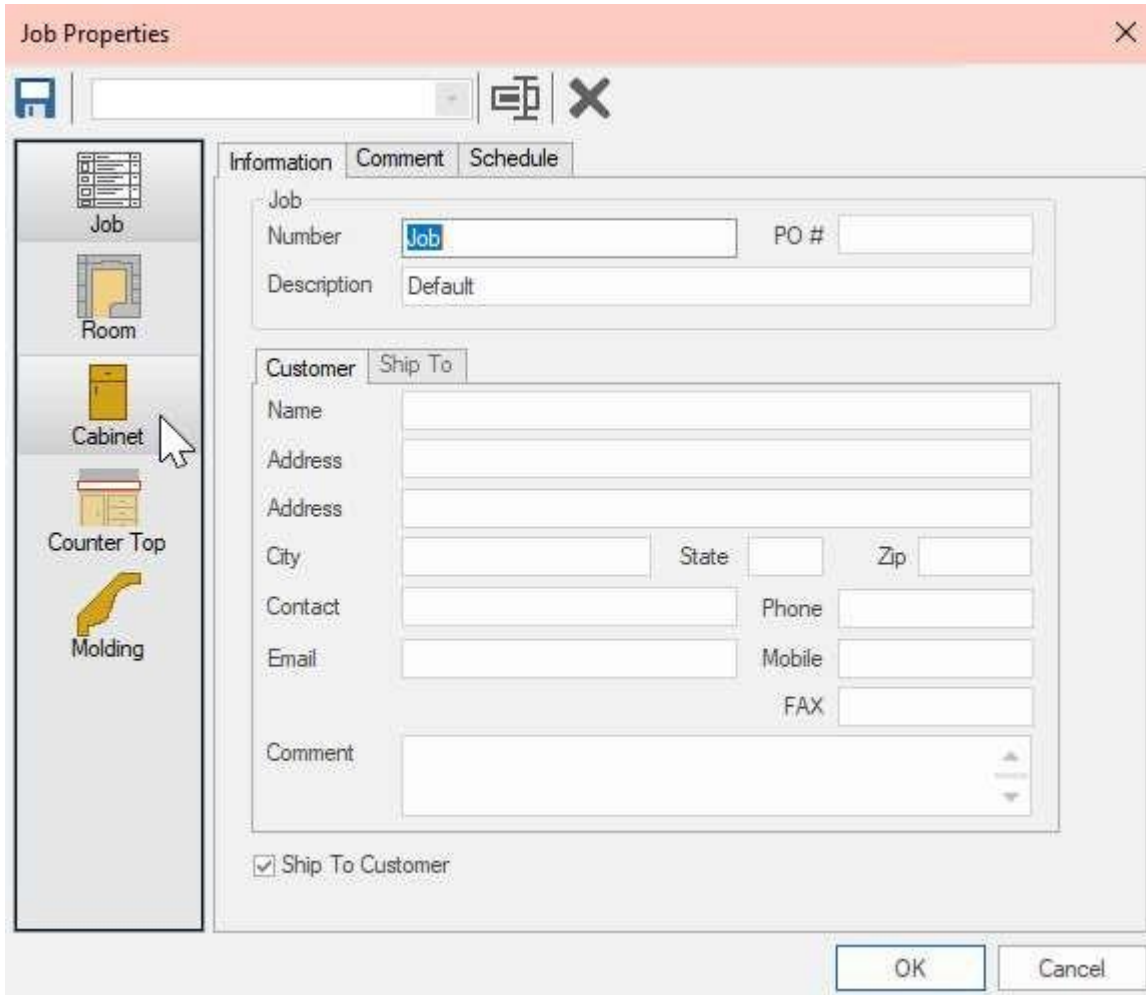
Impériale 1/32

Using the Dörr Industries Package

Once this package is imported, you can start using it in Cabinet Vision.

New Projects

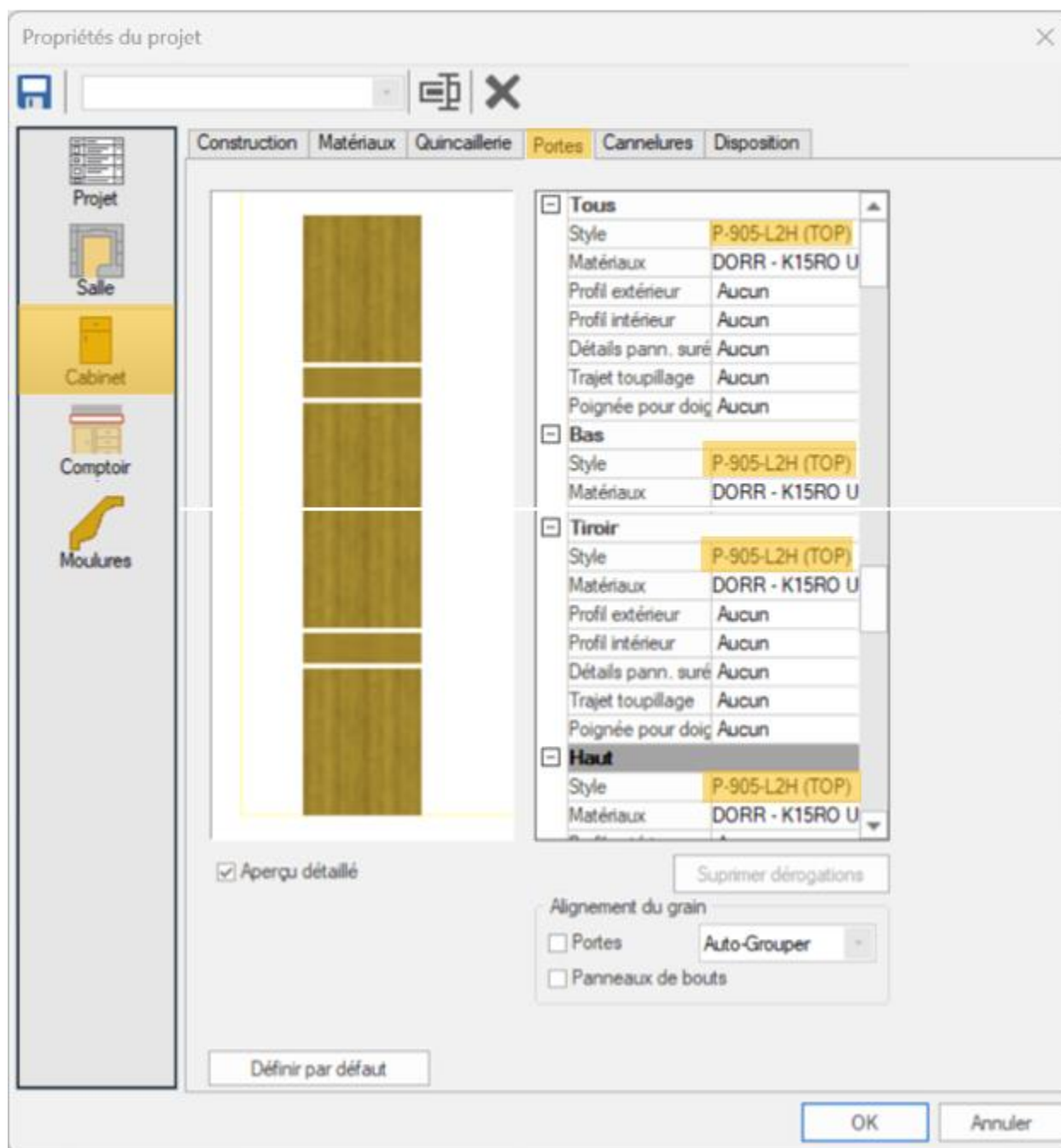
When starting a new project, the components of this package can be selected under Cabinet Properties.



Door Tab Selections

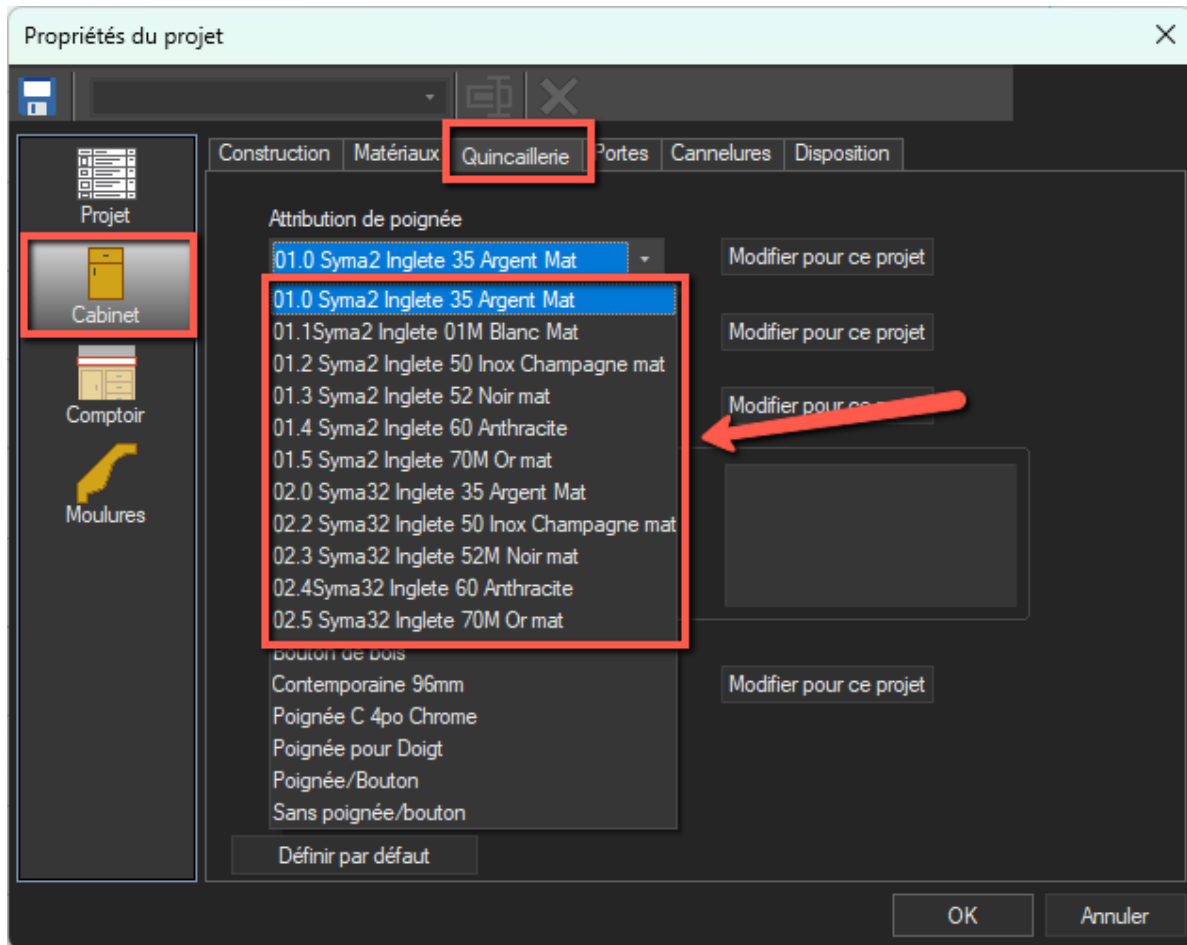
To use the Dörr Industries door catalog, if you use a horizontal handle, select a bottom door—named with the suffix (TOP) (e.g., P-105-1(TOP))—for the style All doors, then a matching drawer style of your choice (e.g., P-105-1), then the corresponding upper door style (e.g., P-105-1), which will be the same door number as the bottom door without the (TOP) suffix.

Note the elements indicated by the yellow highlights.

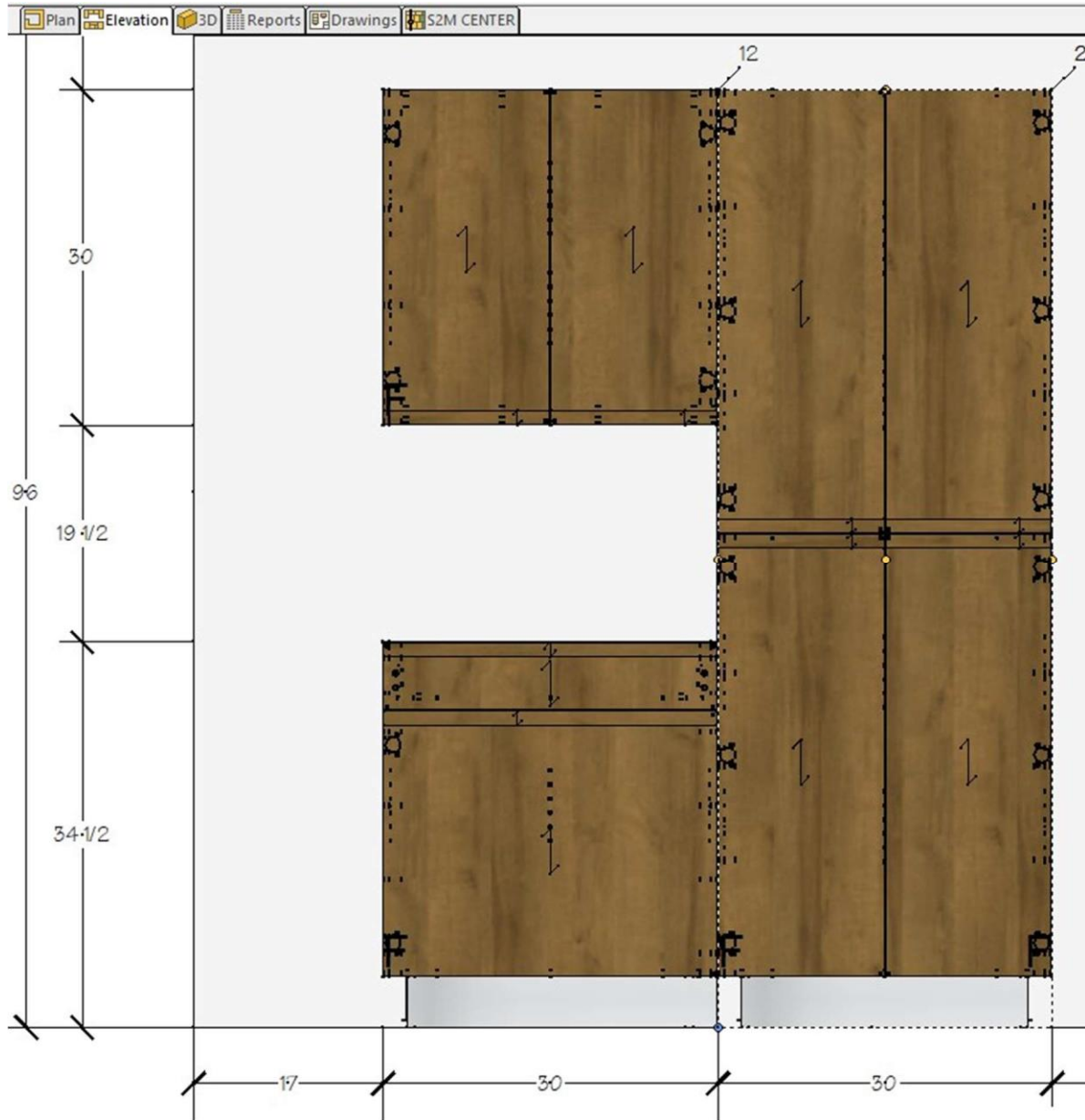


Choose a handle assignment:

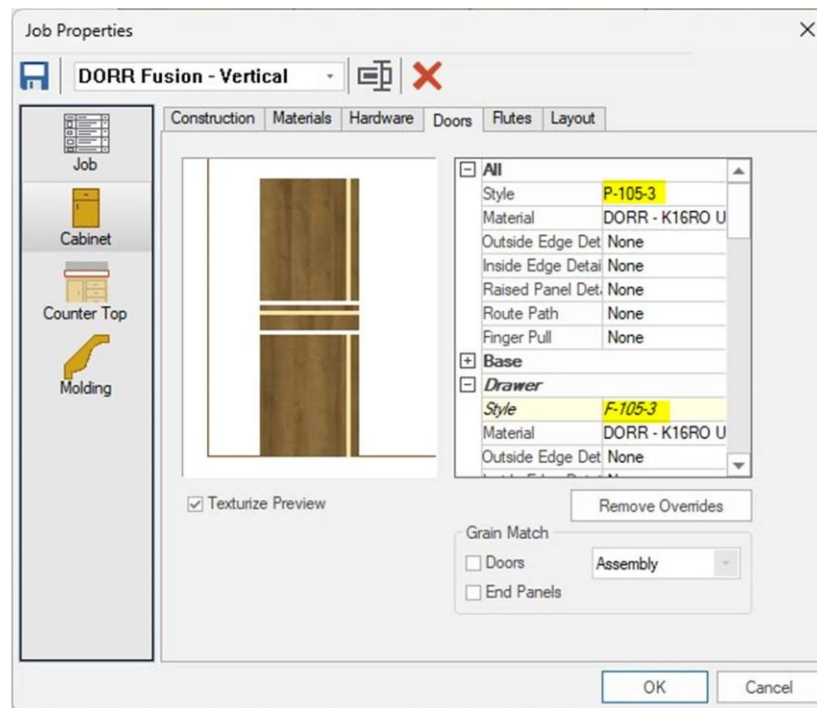
« No pull » for door models with an integrated handle; choose your favorite handle for other models without an integrated handle. And finally, for Ligna models, choose the Ligna handle models in the color of your choice.



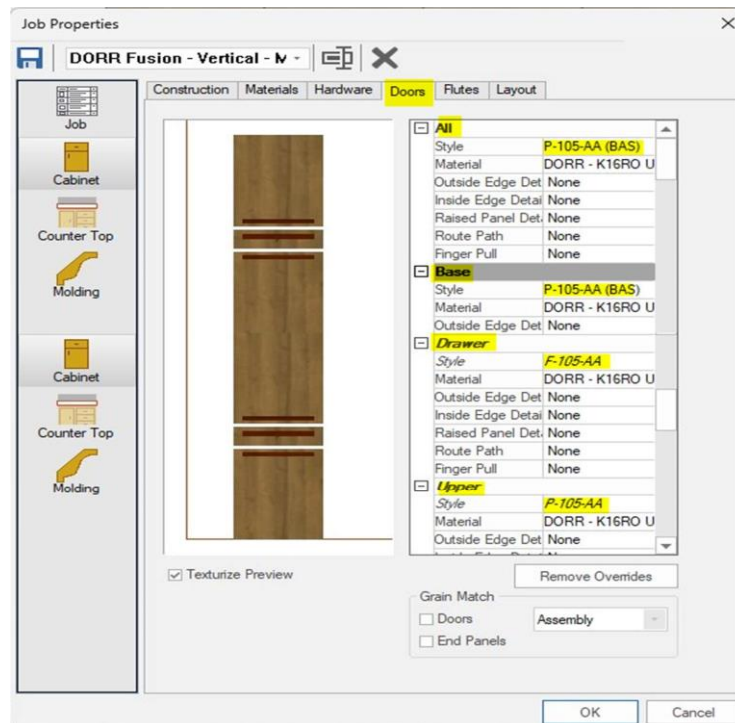
This will show the doors with the correct handle placement. All right doors will automatically be associated with the chosen left doors and should only be called at the cabinet level. When changing hinge placement, you will need to choose the appropriate right or left door manually.



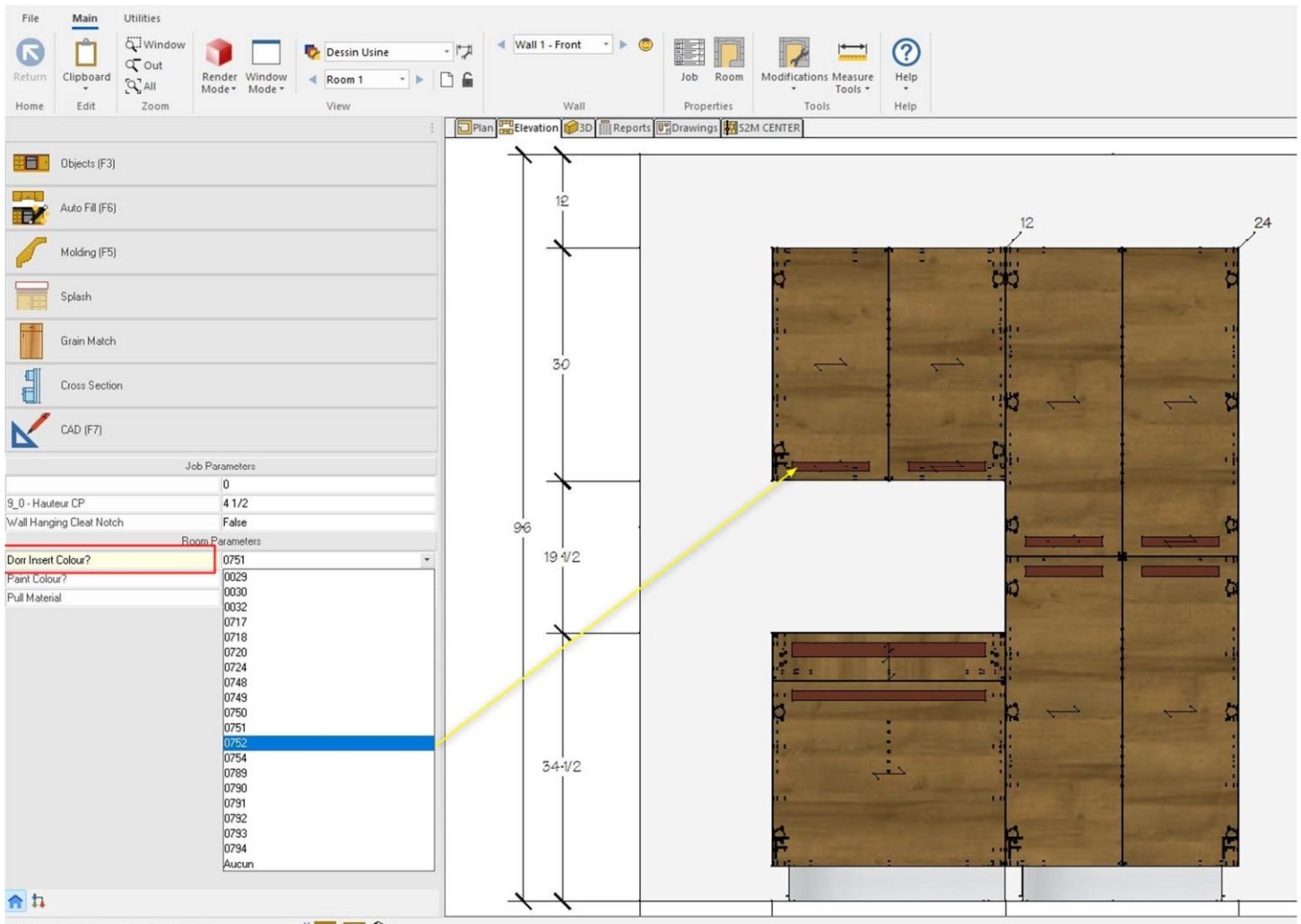
When selecting a vertical door, you can simply select the main door style and a drawer front.



When selecting a door with a laminate insert, follow the same procedure as above, where the all door style is set to a bottom (TOP) and the upper door style is set to the standard door without the suffix.



To select the color of the laminate insert, choose the dropdown list of attributes at the bottom left titled “Dorr insert color?”



Material Assignment

Union Doors will require a material on the custom part called “Door Insert.” This material will appear in the model and reports and can be any material of your choice.

For Fusion doors, the same part simply requires a material assignment, and an UCS will control which material is chosen in the dropdown list, if this door is allowed to insert a material. Otherwise, it will match the door

Schedule Manager

Main

Return

Save to Schedules

Parameters

Assembly

NOIR MAT_M5/8/ NOIR MAT

System Materials

Schedules

Tools

ID=1

Name

NOIR MAT_M5/8/ NOIR MAT

Description

EXT POLYMER/INT POLYERE

Upcharge

0 %

| Part - Part Category | Assigned Material |
|---------------------------|-------------------------|
| RUBAN LED 12V | LED ruban ALUMINUM |
| Serrure a Came | Serrure a Came |
| Spec_Incorrect | MATERIEL NON-DISPONIBLE |
| Support a Chemise | MATERIEL NOT ASSIGNED |
| Support a Cravate | MATERIEL NOT ASSIGNED |
| Support a Epices | 1310140 |
| Support a Tablette | Support Tablette |
| Tablette Smak | Tablette Smak |
| Tiroir a Epices | 15297140 (Épices) |
| TRANSFORMATEUR GRADABLE | NOIR MAT_M5/8_B2C |
| Tringle Escamotable | 1133106 |
| Banding | MATERIEL NON-DISPONIBLE |
| Case | NOIR MAT_M5/8_B2C |
| Exposed | NOIR MAT_M5/8_B2C |
| Interior | NOIR MAT_M5/8_B2C |
| Clouage | NOIR MAT_M5/8_B2C |
| Clouage de tablette | NOIR MAT_M5/8_B2C |
| Coin | NOIR MAT_M5/8_B2C |
| Côté droit non-fini | NOIR MAT_M5/8_B2C |
| Côté gauche non-fini | NOIR MAT_M5/8_B2C |
| Côté intermédiaire droit | NOIR MAT_M5/8_B2C |
| Côté intermédiaire gauche | NOIR MAT_M5/8_B2C |
| Dessous | NOIR MAT_M5/8_B2C |
| Dessus | NOIR MAT_M5/8_B2C |
| Diviseur | NOIR MAT_M5/8_B2C |
| Diviseur horizontal | NOIR MAT_M5/8_B2C |
| Diviseur vertical | NOIR MAT_M5/8_B2C |
| Dos à 45 | NOIR MAT_M5/8_B2C |
| dos angle nf | NOIR MAT_M5/8_B2C |
| dos nf gauche | NOIR MAT_M5/8_B2C |
| Dos non-fini | NOIR MAT_M5/8_B2C |
| Équerre | NOIR MAT_M5/8_B2C |
| Fond | NOIR MAT_M5/8_B2C |
| Insertion Porte | NOIR MAT_M5/8_B2C |
| Nez de comptoir | NOIR MAT_M5/8_B2C |
| Partition | NOIR MAT_M5/8_B2C |
| Piston body | MATERIEL NON-DISPONIBLE |
| Piston Head with Arm | MATERIEL NON-DISPONIBLE |
| Tablette | NOIR MAT_M5/8_B2C |
| Tablette ajustable | NOIR MAT_M5/8_B2C |
| Tablette fixe | NOIR MAT_M5/8_B2C |
| Tablette vitrée | Verre Clair 6mm |

Existing Projects

The Dörr package can be used in existing projects; however, it is important to note the following details:

Updating the Project

In addition to making the appropriate selections at the project or part level as indicated on previous pages, it may also be necessary to visit the Utilities tab in the project and select Update Project with the following selections: Materials, Doors, and Parameters.

